



fundo casa
SOCIOAMBIENTAL
Casa Socio-Environmental Fund

CASA

GET TO KNOW
OUR HISTORY
IN NUMBERS

This is the statistical dossier of the Casa Socio-Environmental Fund. Get to know better the following information:

The Casa Fund is an organization that has been active since 2000 and was institutionalized in 2005. However, the data bank used for most of this dossier only began to be developed in 2013. That is why you will notice that much of the information is related to the 2013-2018 period, in addition to a 2019 research developed with supported organizations and groups. This research circulated as an online questionnaire between February and April 2019; 761 groups received the material and we had 115 valid responses, 15% of our universe.



2000

The Casa Fund founding board is established.

2005

The Casa Socio-Environmental Fund is created.

2013

The data bank is implemented for enhanced monitoring of actions and project impacts.

2019

Evaluation through research with over 700 supported groups.

2019 was an important year for us and after so many years of experience, we decided it was time to document our impact. In the next pages, we will describe all our achievements with the support of organizations and people like you.



AN OVERVIEW

09 COUNTRIES

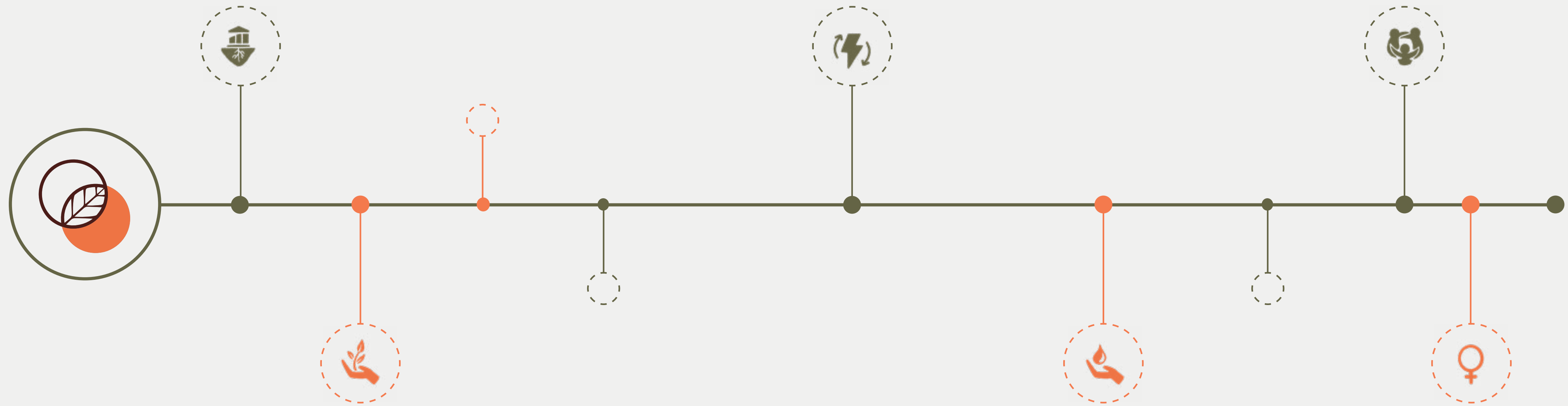
1,700 PROJECTS

The Casa Socio-Environmental Fund is a nonprofit, nongovernment organization that funds and strengthens the socio-environmental capacities of NGOs and small community groups in South America. We have already supported over 1,700 projects in nine countries in this region.

Forests and rivers do not respect political borders. Most biomes cover the territory of several countries. The Casa Fund also functions in the same way, with flexibility and adapting to different realities. We are a Brazilian fund, but we have integrated work in all South America, ensuring that impacts will actually meet the complexities and specificities of diverse regions.

Our grants go directly to grassroots communities, thus eliminating intermediaries. Our objective is to strengthen the capacities of organizations working with the following issues: **environmental protection, community development, institutional strengthening, renewable energy, protection of waters, women and young people defending the environment, etc.**

To deliver our support to such remote and innovative communities, we have to raise funds. Thus, we work in partnership with national and international philanthropic institutions, which understand our strategy and use Casa's structure to ensure a responsible distribution of their funds, as we can reach groups they alone would never reach.



We don't believe in ready-made formulas and single solutions

By supporting mobilizations and other movements in rural or urban areas, the Casa Fund strengthens organizations and helps in creating the conditions for relevant socio-environmental projects to move forward, respecting the diversity of biomes and populations in South America.

STRENGTHENING CAPACITIES

The Casa Fund works to expand the autonomy and independence of grassroots groups. To achieve this goal, it is strategic to strengthen their capacities.

The relationship with supported groups is developed through pedagogical processes, from project selection, contract signing, and up to project monitoring. Capacities are strengthened through workshops, but also by exchanges among the groups, experience sharing, and processes to facilitate learning from peers. Themes are focused on project elaboration, management, and communication, among other themes suggested by the groups.

Strengthening capacities has the following objectives:

- 1 Stimulate good project management.
- 2 Enable knowledge exchanges and joint learning.
- 3 Expand grantees' network of contacts.
- 4 Enabling groups to achieve their own sustainability.

SUPPORTED PROJECTS AND GRANTS

by the Casa Socio-Environmental Fund

SUPPORT TO
1,706
INITIATIVES

US\$
9,021,755.12
IN GRANTS

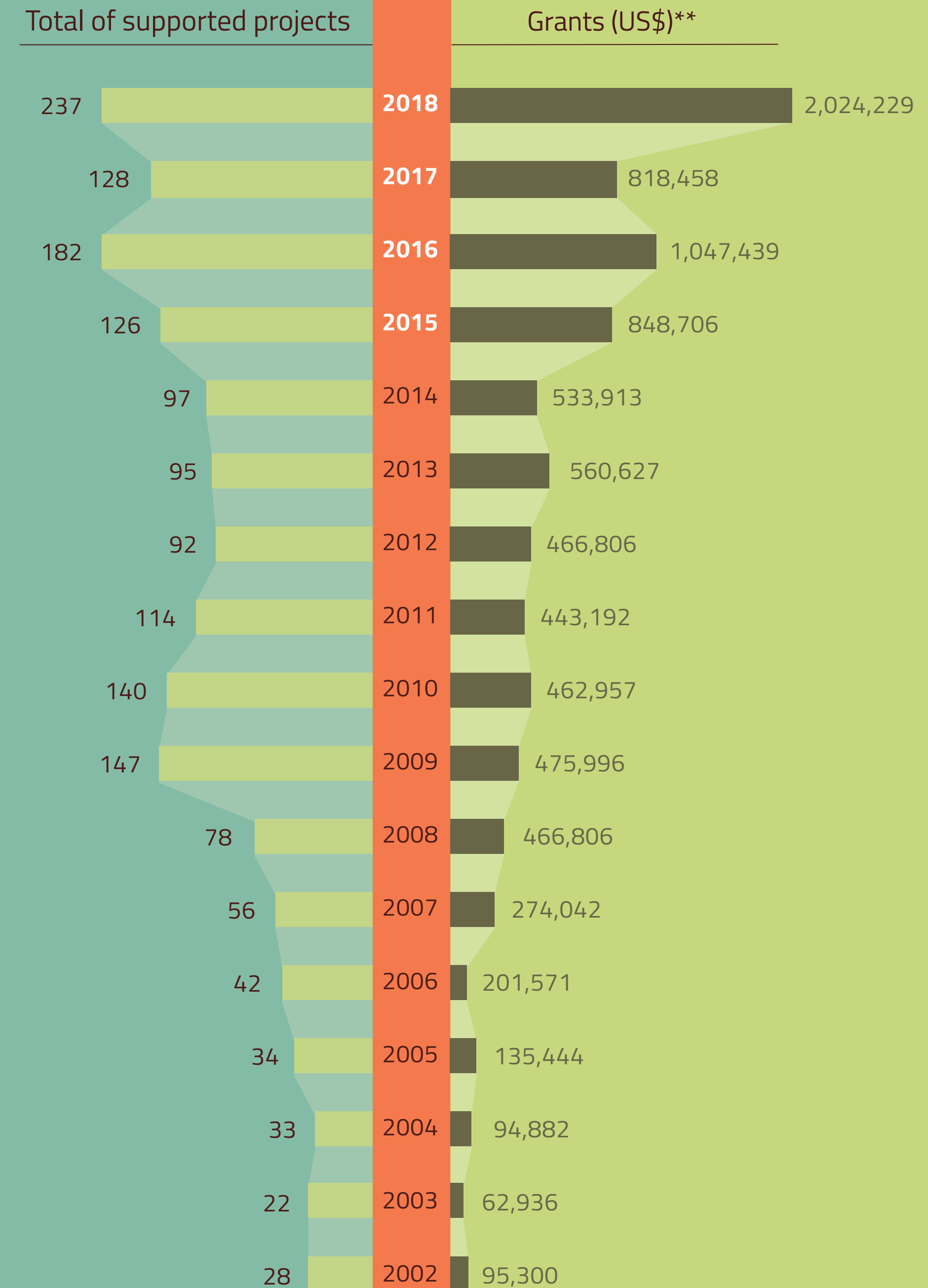
Since its inception and up to 2018, the Casa Fund has supported 1,706 socio-environmental initiatives by NGOs and community groups in Brazil and South America. The grants totaled R\$ 25,243,860.32 (US\$ 9,021,755.12).

Note the evolution of the total of supported projects and funds donated by the Casa Fund since 2002 in the chart on the side.

TOTAL OF PROJECTS . these figures refer to the total of projects contracted in a given year. This does not reflect Casa's budgetary execution, as financial transfers to the projects are made in installments and could occur in a year different from the contract year.

FUNDS DONATED . These amounts refer to number/quantity of supported projects.

SOURCE: Casa Socio-Environmental Fund, 2019.

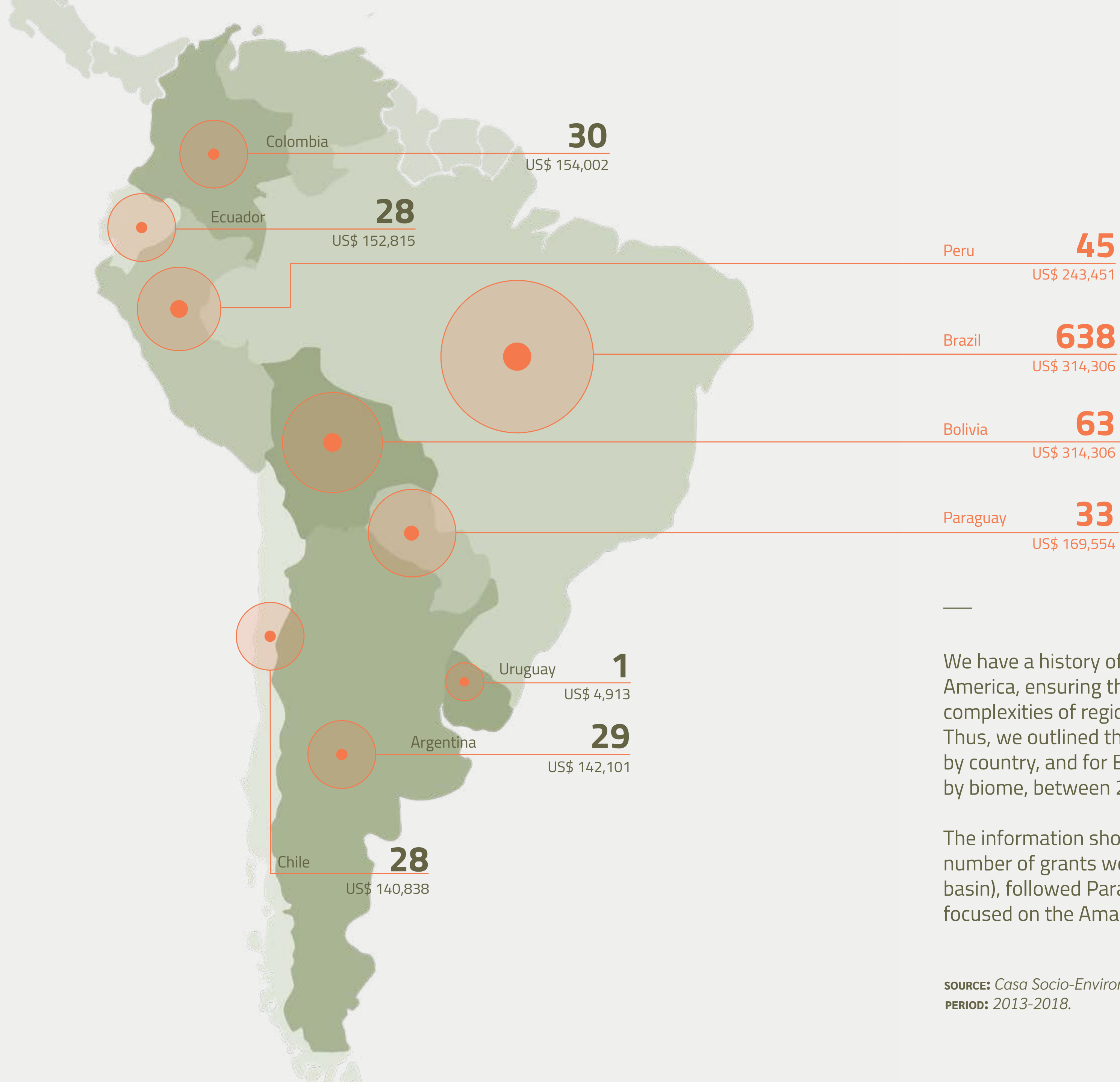




Out of the total grants in the 2007 -2018 period, the Casa Fund invested R\$ 1,225,834.25 (US\$ 428,770.28) in activities to strengthen capacities, such as workshops and capacity-building work.

We think these activities are essential to ensure the autonomy of supported groups, and we will not desist from this objective.

SUPPORTED PROJECTS BY COUNTRY

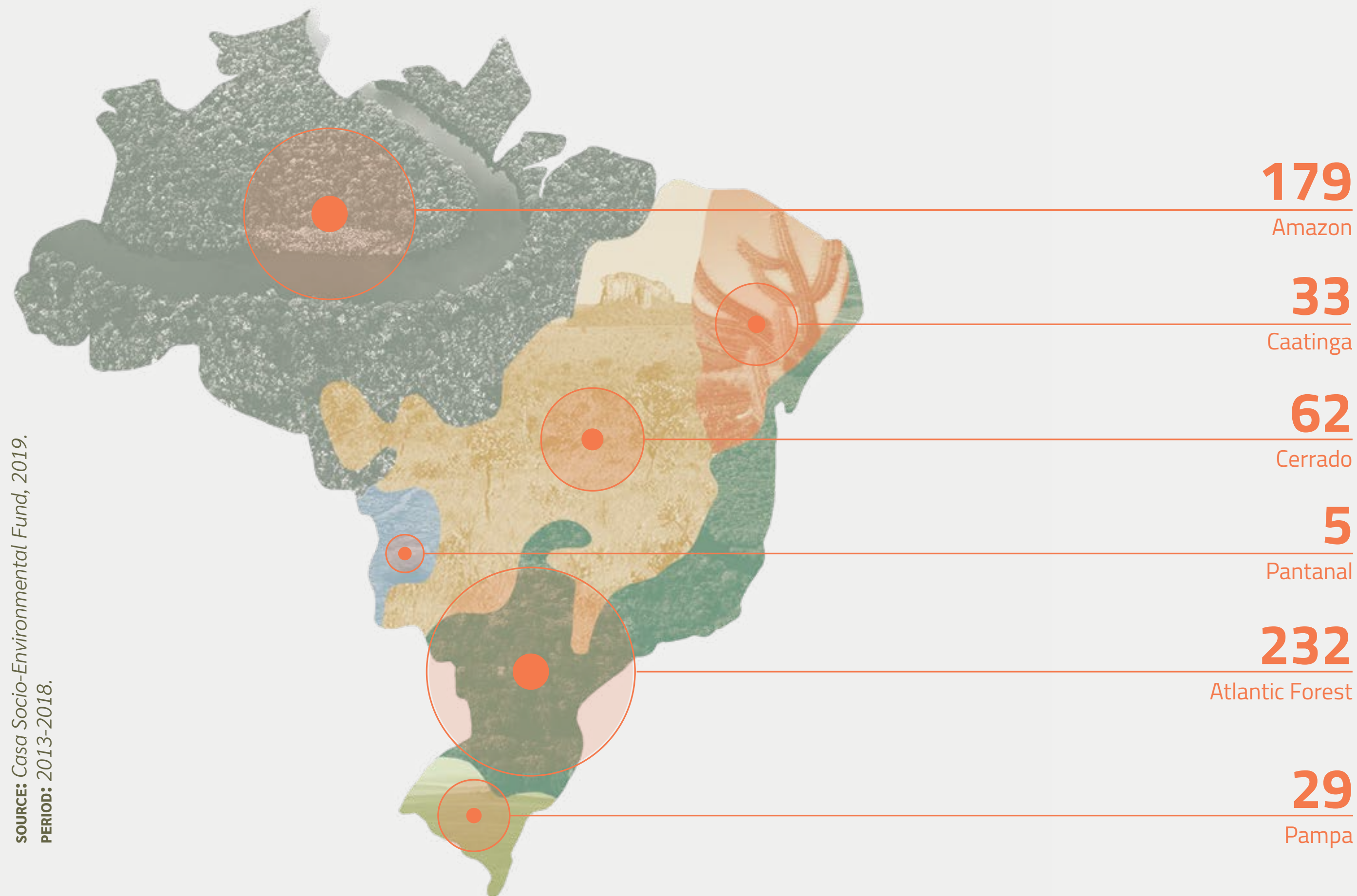


We have a history of integrated actions in all South America, ensuring that impacts meet the local complexities of regions that are so diverse and rich. Thus, we outlined the panorama of supported projects by country, and for Brazil we also mapped the scenario by biome, between 2013 and 2018.

The information shows that outside Brazil the larger number of grants went to Bolivia and Peru (Amazon basin), followed Paraguay (Chaco) and Colombia (also focused on the Amazon region).

SOURCE: Casa Socio-Environmental Fund, 2019.
 PERIOD: 2013-2018.

SOURCE: Casa Socio-Environmental Fund, 2019.
PERIOD: 2013-2018.



SUPPORTED PROJECTS BY BIOME

According to the definition of the Brazilian Institute of Geography and Statistics (IBGE), biome is “a collection of life (plant and animal) constituted by the grouping of contiguous vegetation types identifiable on a regional scale with similar geoclimatic conditions and shared history, which results in a unique biological diversity.” In other words, biome could be defined as a large area of life made up of a complex of ecosystems with homogenous characteristics.

In the map on the side, we included only projects that are exclusively located in a single biome to facilitate data visualization. There are other 82 projects also carried out in those periods but which cover two or more biomes.

TOTAL OF PROJECTS: **622**



Note: the information indicates that the larger number of projects supported by us is located in the Atlantic Forest and Amazon biomes.



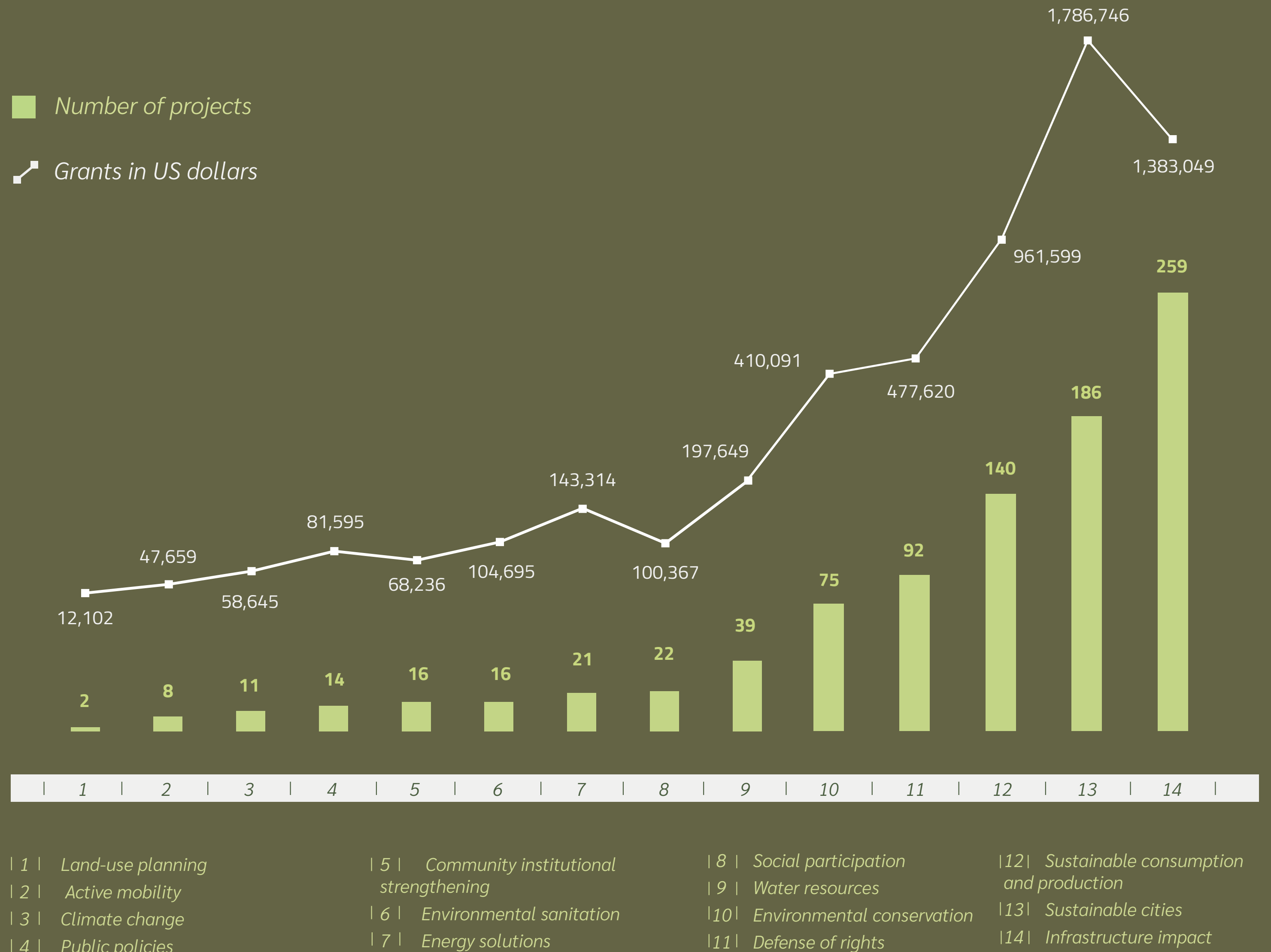
This trend is significant and did not happen by chance, as the Amazon Basin is one of the priorities defined by Casa given its complexity and socio-environmental diversity.

WORKING THEMES

Understand the themes that receive more support from the Casa Fund and the distribution of funds by theme.

The themes “impact on infrastructure,” “sustainable cities,” and “sustainable consumption and production” are the areas that receive more grants. They are directly related to our priority programmatic lines linked to the South American programs Casa Amazonia and Casa Cities. In turn, the “defense of rights” and “environmental conservation” are transversal working lines for projects that have been supported throughout the years and also deserve to be highlighted.

SOURCE: Casa Socio-Environmental Fund, 2019.
PERIOD: 2013-2018.



STRATEGIC LINES

Our strategic lines are areas prioritized for investment. They are the starting point for all the Fund's programs and actions. These strategic lines are defined by our Board of Directors, based on the demands from our supported groups, and they are reevaluated from time to time.

154

US\$ 1,400,176

Sustainable cities (sanitation, active mobility, agroecology, public policies, food security).

This figure refers only to the number of projects that are 100% within this strategy. There are other projects, also in this strategic line, but they are not prioritized.

334

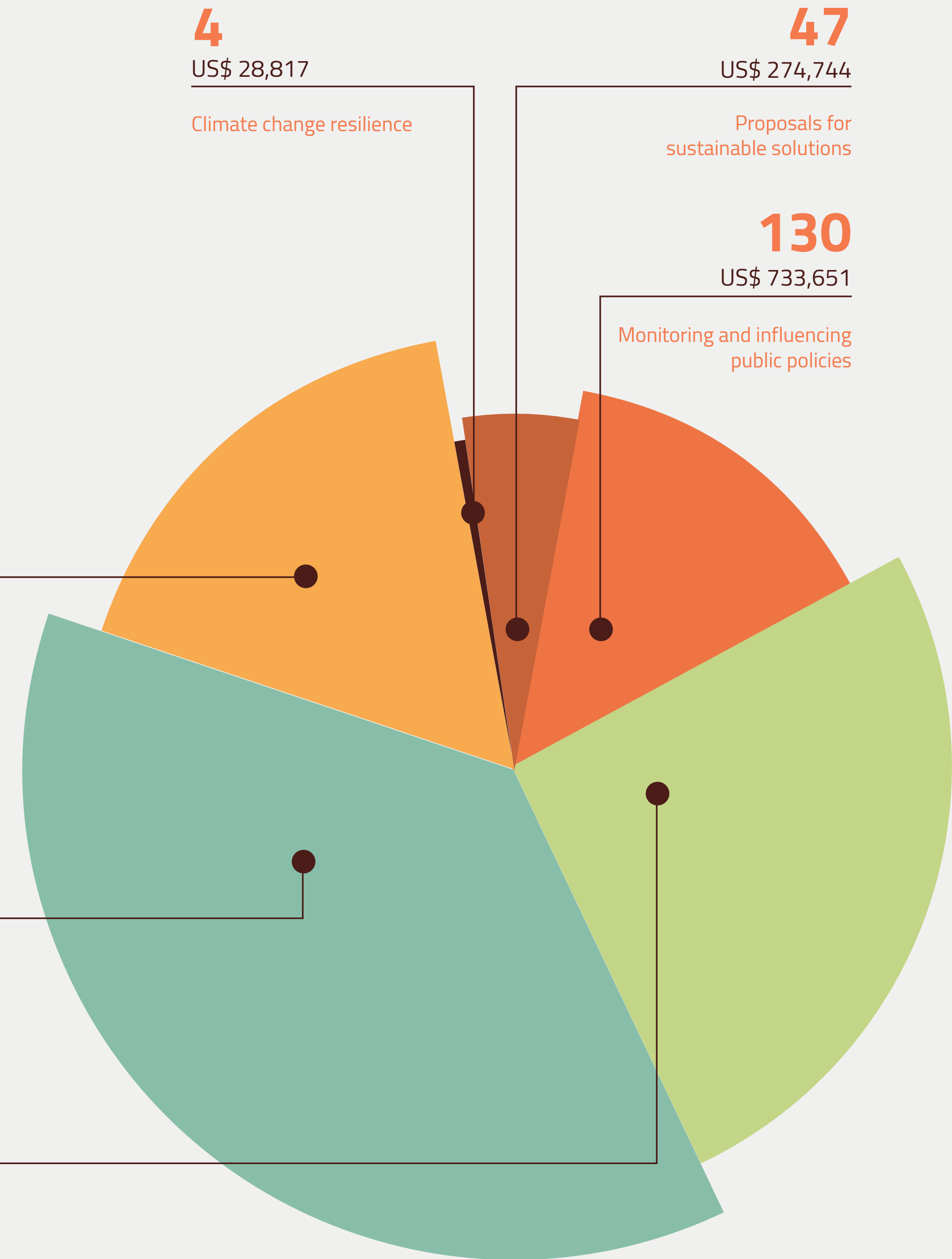
US\$ 2,008,563

Protection of territories and human rights, and protection of nature.

232

US\$ 1,388,594

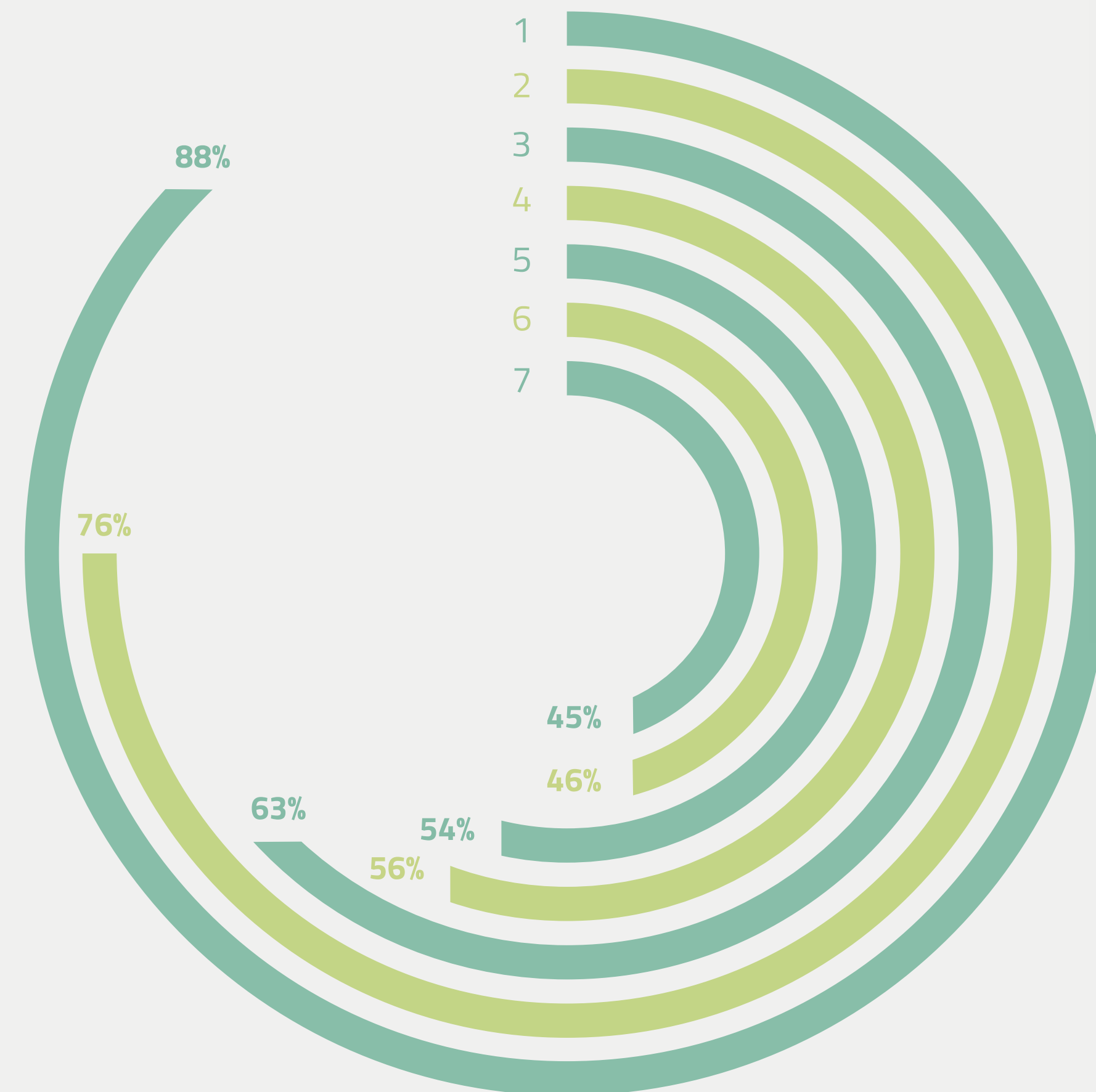
Strengthening capacities (institutional strengthening, training, education, practical capacity building, and political education for civil society leaders)



ACTIVITIES AND ACTIONS CARRIED OUT BY SUPPORTED ORGANIZATIONS AND GROUPS

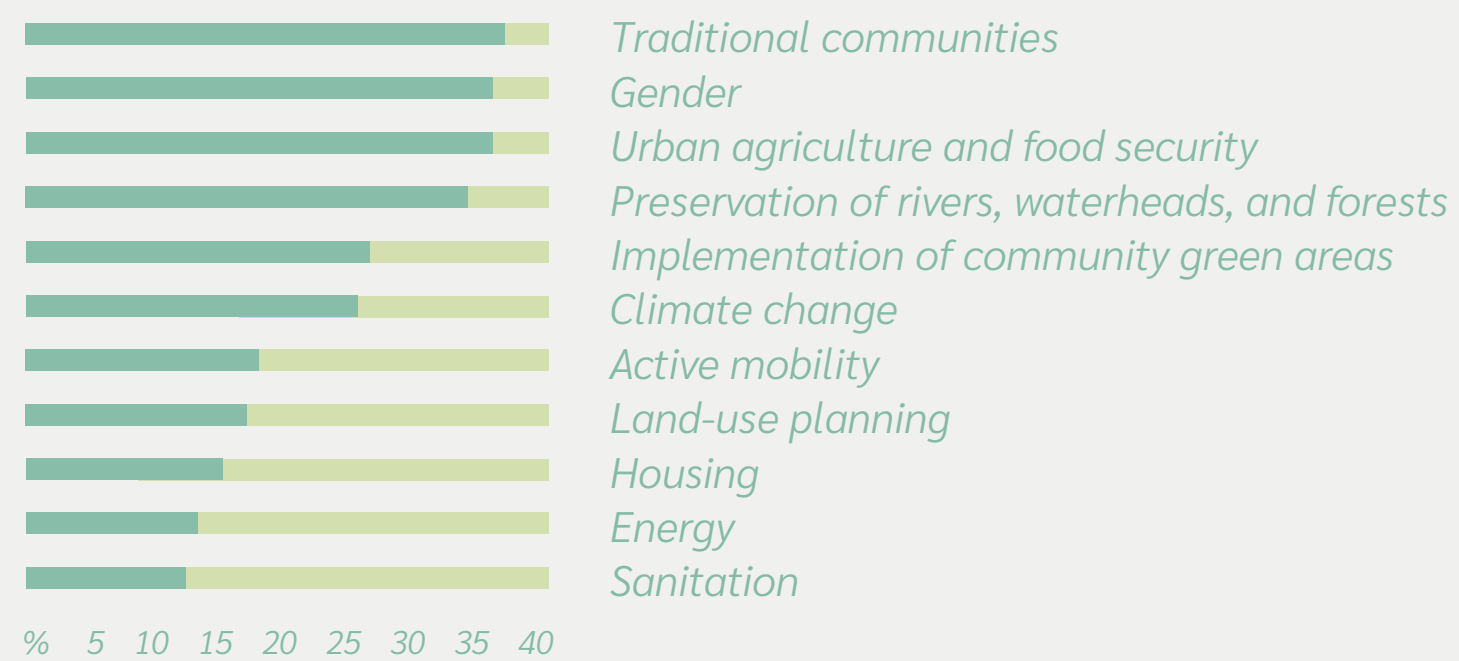
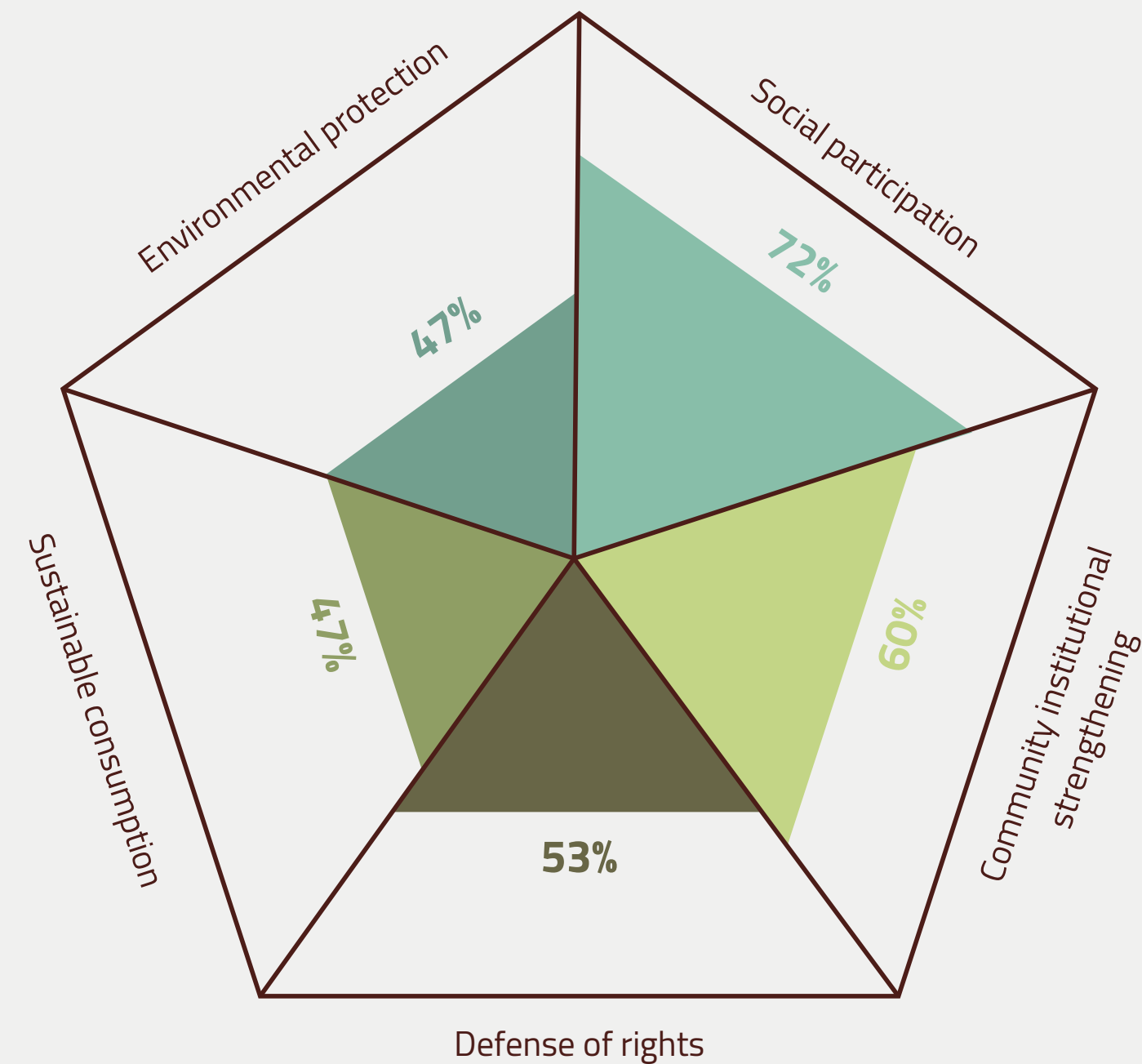
The main activities carried out by the supported groups reflect and reinforce the priority strategy outlined by our Board of Directors. Thus, the highlighted actions are the following:

- 1 **Development of capacities**
- 2 **Debates and networking with several actors**
- 3 **Networking with public policies**
- 4 **Participation in decision making processes**
- 5 **Protection/conservation of territories**
- 6 Mobilization of local resources
- 7 Valorization and preservation of traditional ways of life.



SOURCE: Casa Socio-Environmental Fund, 2019.

PERIOD: 2013-2018.



PROFILE OF SUPPORTED ORGANIZATIONS AND GROUPS

Do you remember our 2019 research with supported organizations and groups? This research was one of our initiatives to ensure ongoing updating of our figures, and data from 115 respondents from Brazil and South America led us to conclude that the highlights of our work are the following areas: social participation, community institutional strengthening, and defense of rights. Although sustainable consumption and environmental protection are significant areas of work, aligned with the country's socio-environmental agenda, our strategic priorities are building the capacities of organized civil society, strengthening rights, qualifying organizations/ groups for networking, community development and engagement, as well as monitoring public policies, especially at local level.

NOTE: All categories/options used in the questionnaire and charts are in accordance with the classification criteria of our institutional data bank.

SOURCE: Casa Socio-Environmental Fund, 2019.

PERIOD: 2019.

In addition to their own work themes, each supported organization or group defends the causes that best represent them, and we compile this data according to the degree of importance they attribute to those causes:

70% Human rights



65% Gender issues



60% Poverty reduction and biodiversity conservation



55% Conservation and defense of rights



It is worth noting that for 70% of supported organizations/groups issues related to human rights are a priority (including gender issues – 65%), followed by poverty reduction and biodiversity conservation.

The information presented indicates that organization/groups supported by the Casa Fund effectively develop socio-environmental work, as social causes (in general) and the rights agenda are relevant areas of work.

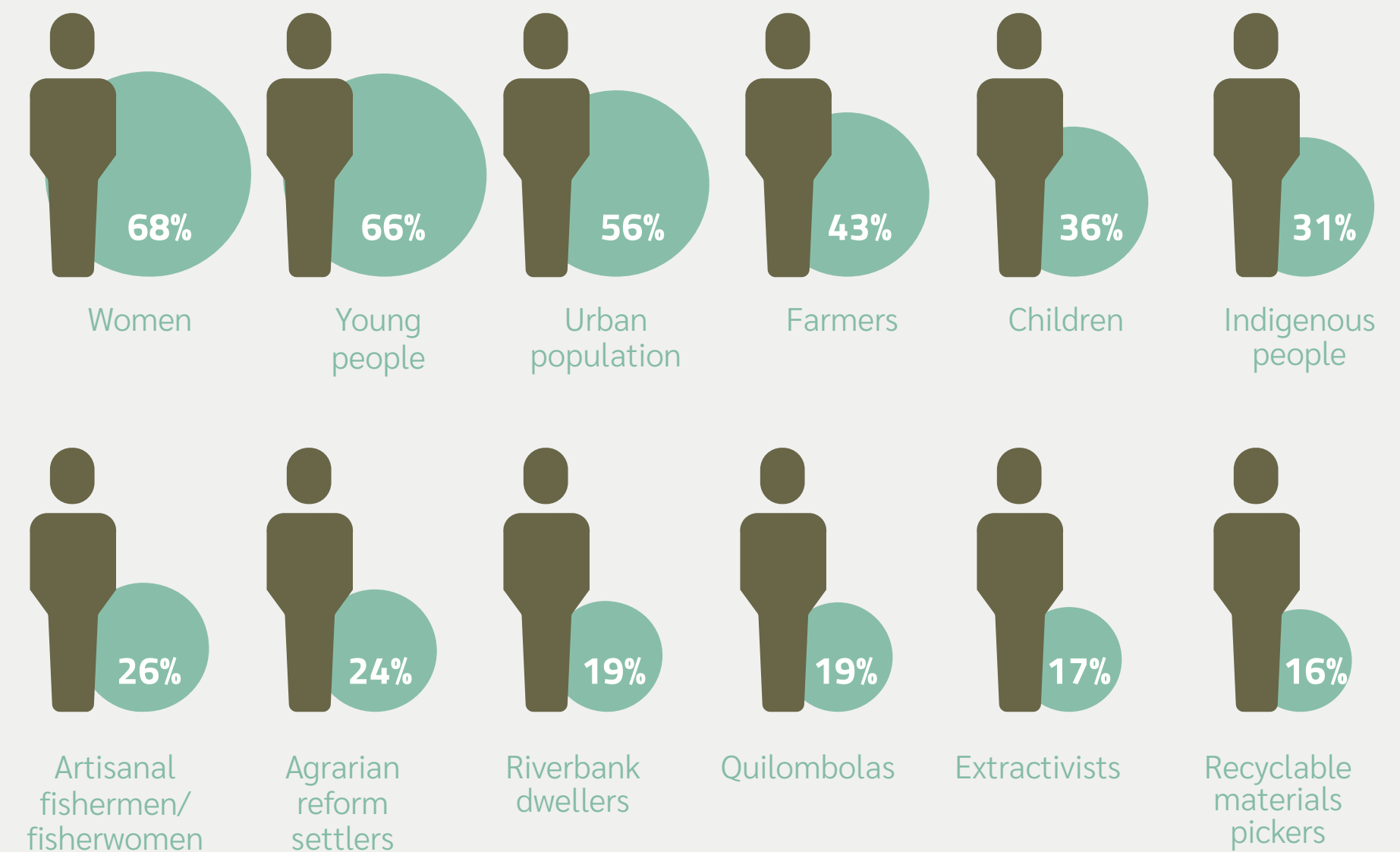
SOURCE: Casa Socio-Environmental Fund, 2019.
NOTE: infographics based on multiple-answer options.
PERIOD: 2019.

PEOPLE ASSISTED



We also have data on the people assisted by our grantees. Thus, we can understand in a much broader scale the impact of our actions.

The information presented indicates that the most important publics are women and young people, followed by farmers and the urban population (this latter group significantly increased in the last few years because of the program Casa Cities). Children are also a representative group because of strong work at community level, involving families and school-age children.



SOURCE: Casa Socio-Environmental Fund, 2019.
PERIOD: 2019.

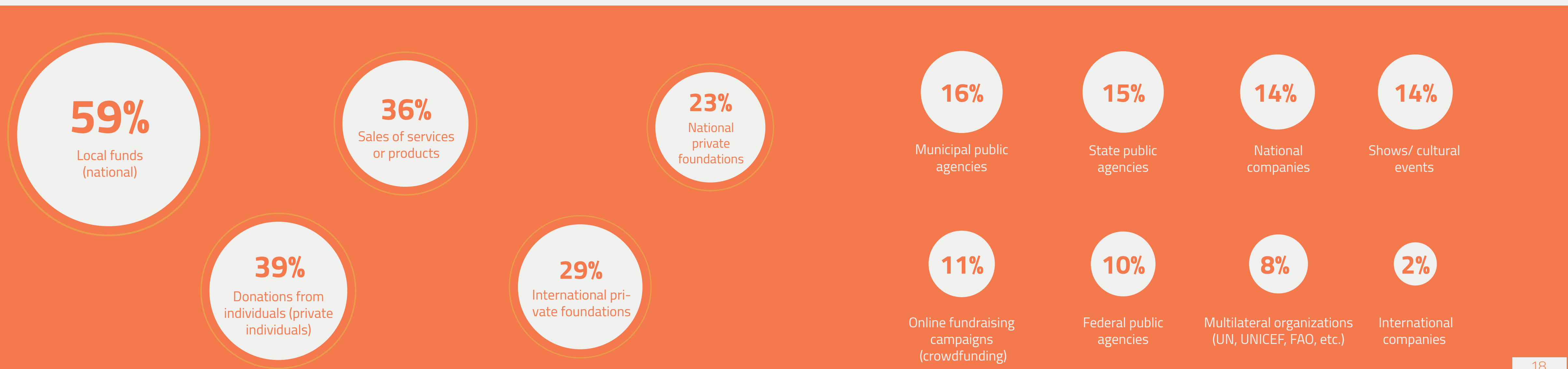
NOTE: infographics based on multiple-answer options.

HOW DO GRANTEES SUPPORT THEMSELVES?

The Casa Socio-Environmental Fund is not the only source of funding for our grantees. However, we know we have a key role in maintaining those initiatives, as their main sources of funding are third-party donations, especially from local funds and, to a lesser extent, national and international private foundations. Our survey

also indicates that donations from private individuals and the sale of services are other important sources. This shows the very positive development of strategies to mobilize local resources and assets for financial sustainability.

SOURCE: Casa Socio-Environmental Fund, 2019.
NOTE: infographics based on multiple-answer options.
PERIOD: 2019.



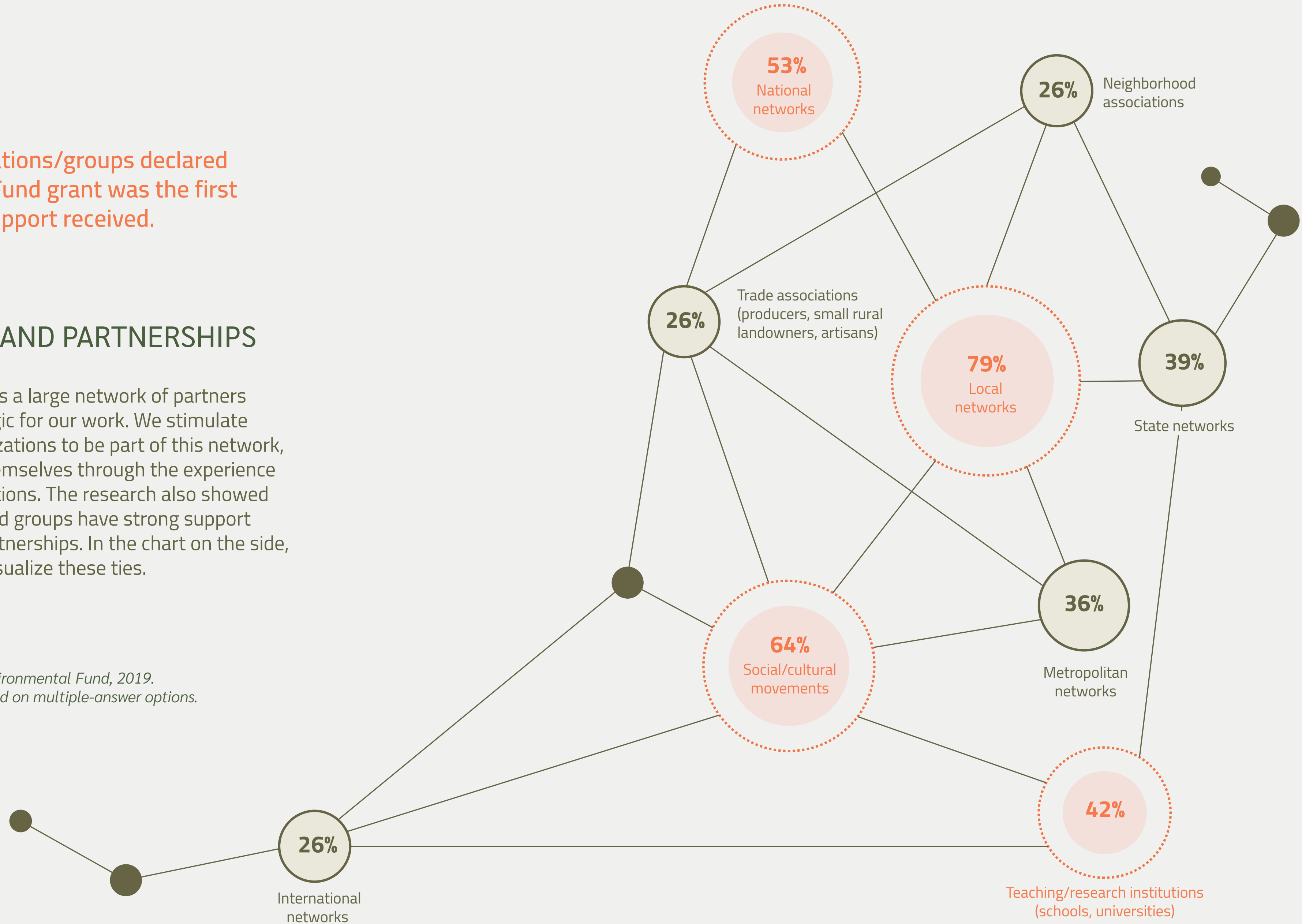
39%

of the organizations/groups declared that the Casa Fund grant was the first institutional support received.

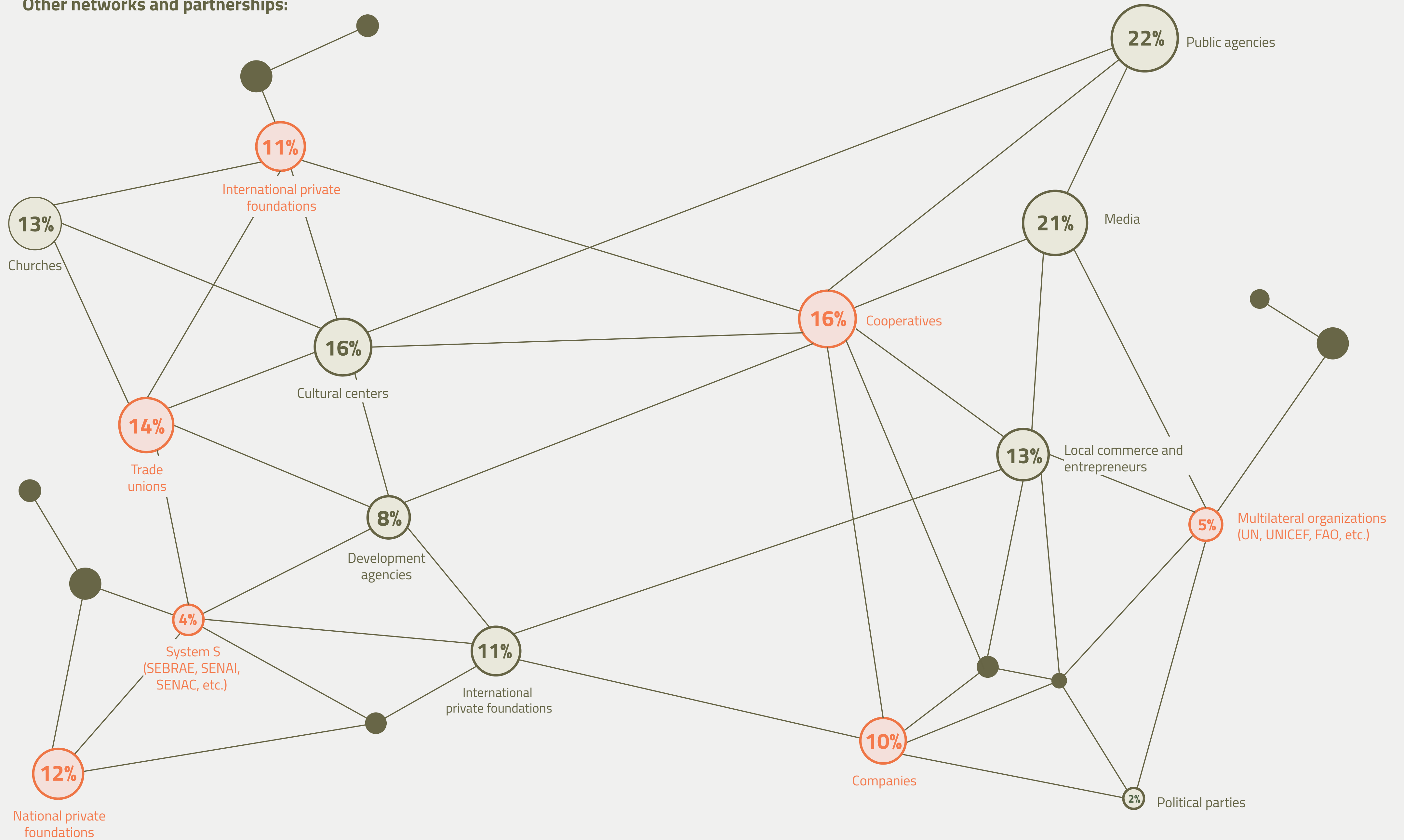
NETWORKS AND PARTNERSHIPS

The Casa Fund has a large network of partners and this is strategic for our work. We stimulate supported organizations to be part of this network, strengthening themselves through the experience of other organizations. The research also showed that our supported groups have strong support networks and partnerships. In the chart on the side, it is possible to visualize these ties.

SOURCE: Casa Socio-Environmental Fund, 2019.
NOTE: infographics based on multiple-answer options.
PERIOD: 2019.



Other networks and partnerships:



OUR IMPACT IN PRACTICE

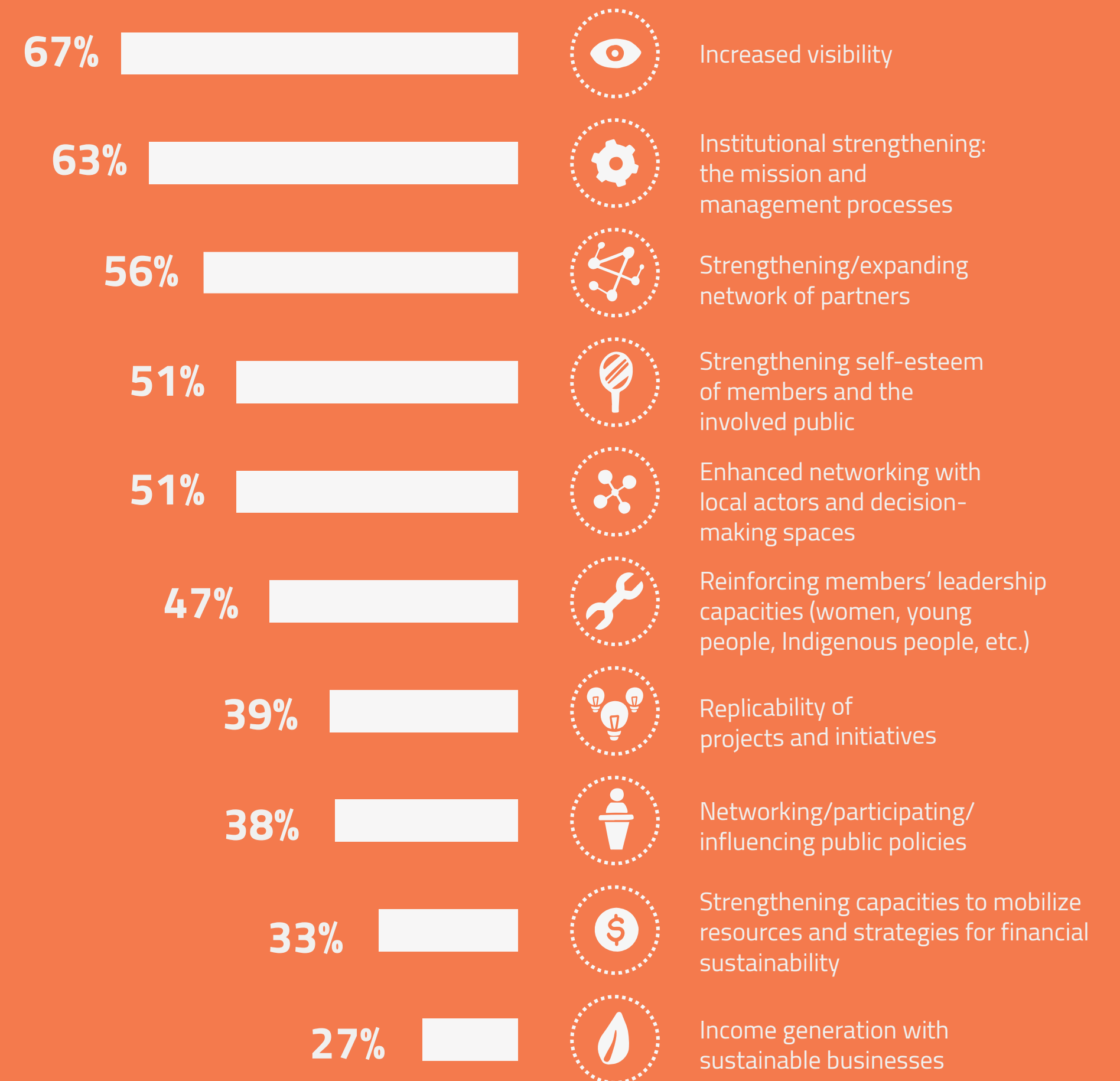
We are very proud of the results achieved by our intense efforts in the last few years. The results and impacts of our support to organizations and groups are multiple and diversified, and we highlight the following: work visibility, institutional strengthening, expansion of the network of partners, local networking for decision-making processes, and self-esteem of involved actors.

This data is significant, as building the capacities of organized civil society, strengthening rights, qualifying organizations/groups for networking, community development and engagement, and networking with public policies, especially at local level, are priority strategies for the Casa Fund.

SOURCE: Casa Socio-Environmental Fund, 2019.

NOTE: infographics based on multiple-answer options.

PERIOD: 2019.



WWW.DOE.CASA.ORG.BR

We are very proud to be building a legacy aligned with all our beliefs and the reasons for creating Casa. We know we still have a lot of work to do in the coming years.

We count on you to expand our work.

Research: **Graciela Hopstein**

Data collection: **Alahir Maha Amaral and Rodrigo Moreira**

Revision: **João Victor Pacifico**

Translation into English: **JF | Tradução e Edição de Textos Ltda.**

Design: **Motora Design**

Photography: **Attilio Zolin/Casa and Andrey Leitão**

Team 2019

Casa Socio-Environmental Fund

Executive Director: **Cristina Orphea**

Institutional Relations: **Maria Amália Souza**

Technical team: **Maíra Lacerda, Inimá P. Lacerda,**

Claudia Gibeli, Vanessa Ourique Purper, Taila

Wengrynek, Alahir Maha Amaral, Janice Mello,

Jani Aparecida Joana, and Attilio Zolin.

Board of Directors - 2019: **Silvio Sant'ana;**

Almos Makray; Rubens Harry Born; Mércia Consolação Silva;

Carlos Rittl; Brent Millikan; Selma dos Santos Dealdina; Severiá

Maria Idioriê Xavante